



CATALOG OF INVESTMENT PLOTS

FEZ GRODNOINVEST | 2023

- 12 industrial sites in 8 cities
- 4156,62 ha of total area
- 350 ha of free sites



PREFERENCES

FEZ residents are exempt from paying:

Land plots are provided without auction

Land plot is provided for a period up to 2049

Investor is exempt from payment for compensation for forestry and agricultural losses

income tax for the entire duration of the project

real estate tax on buildings and structures

land tax and land rent

customs duties and VAT

- *when exporting finished products outside the EAEU*
- *By delivering of finished products between residents*

**TOTAL TAX BURDEN
REDUCED BY**

40%

PLOT NO 1 SECTOR 1 (GRANDICHI DISTRICT)

AVAILABLE AREA: 27,3 ha

ENGINEERING INFRASTRUCTURE:



power supply



heating network



water supply



sewerage



gas supply

TRANSPORT AVAILABILITY:

2- and 4-lane roads to the plot
on the land plot there is a railway track
(gauge 1520 mm) Grodno airport - 10 km away



— borders of FEZ Grodnoinvest

— borders of free plots



PLOT NO 2 SECTOR1 (NOVAYA GOZHA DISTRICT)

AVAILABLE AREA: 23,29 ha

ENGINEERING INFRASTRUCTURE:



power supply



water supply



sewerage



gas supply

TRANSPORT AVAILABILITY:

2-lane road to the plot
railway track (gauge 1520 mm) 10 km from the plot
Grodno airport - 20 km away



PLOT NO 2 SECTOR 2 (RAYSTA DISTRICT)

AVAILABLE AREA: 45,64 ha

ENGINEERING INFRASTRUCTURE:



power supply



heating network



water supply



sewerage



gas supply

TRANSPORT AVAILABILITY:

2-lane road to the plot

railway track (gauge 1520 mm) 15 km from the plot

Grodno airport - 20 km away



PLOT NO 3 SECTOR 1 (KOLBASINO DISTRICT)

AVAILABLE AREA: 30 ha

ENGINEERING INFRASTRUCTURE:



power supply



heating network



water supply



sewerage



gas supply

TRANSPORT AVAILABILITY:

asphalt road

railway track (gauge 1520 mm) on the plot

Grodno airport - 10 km away



— borders of FEZ Grodnoinvest

— borders of free plots



PLOT NO 4 (AULS DISTRICT)

AVAILABLE AREA: 127,05 ha

ENGINEERING INFRASTRUCTURE:



power supply



heating network



water supply



sewerage



gas supply



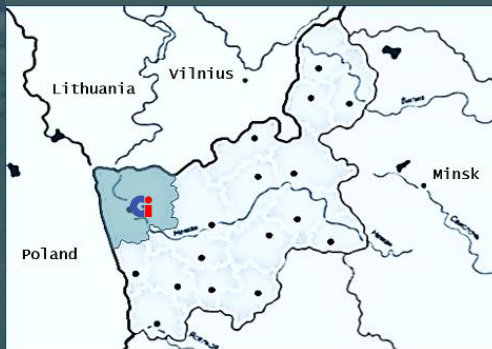
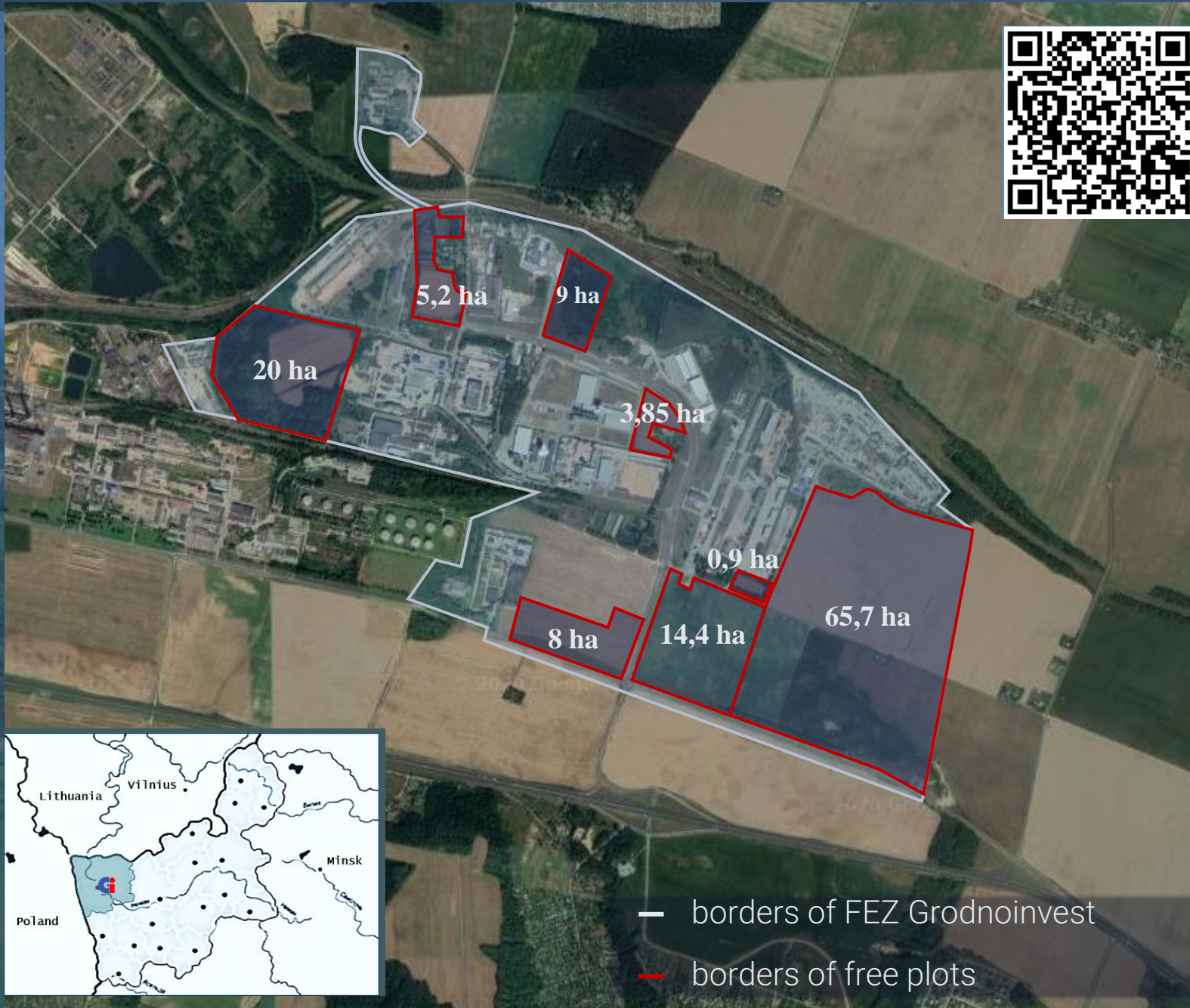
telecommunications

TRANSPORT AVAILABILITY:

2-lane road to the plot

railway track (gauge 1520 mm) on the plot

Grodno airport - 10 km away



PLOT NO 5 SECTOR1 (OBUHOVO DISTRICT)

AVAILABLE AREA: 73,3 ha

ENGINEERING INFRASTRUCTURE:



power supply



telecommunications



water supply



gas supply

TRANSPORT AVAILABILITY:

M6 highway 2 km from the plot
railway track (gauge 1520 mm) 4 km from the plot
Grodno airport on the plot



— borders of FEZ Grodnoinvest
— borders of free plots

PLOT NO 5 SECTOR 2 (BRUZGI)

AVAILABLE AREA: **114 ha**

ENGINEERING INFRASTRUCTURE:



power supply



telecommunications



water supply



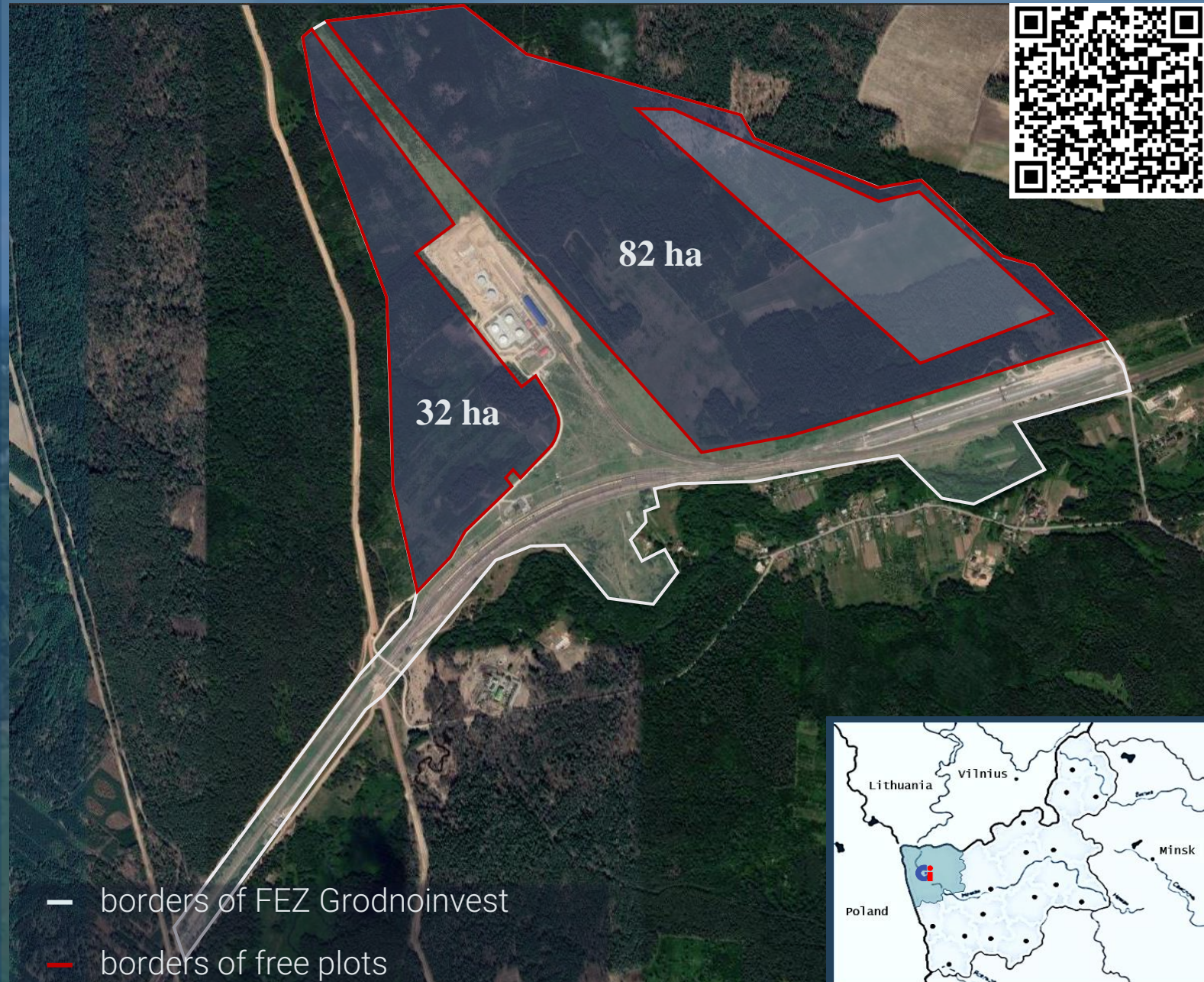
sewerage



gas supply

TRANSPORT AVAILABILITY:

Asphalt concrete road
railway track (gauge 1435 and 1520 mm) on the plot
Grodno airport - 20 km away



PLOT NO 5 SECTOR 3 (GRDONO DISTRICT)

AVAILABLE AREA: 143,5 ha

ENGINEERING INFRASTRUCTURE:



power supply



telecommunications



water supply



gas supply

TRANSPORT AVAILABILITY:

Asphalt concrete road

railway track (1435mm and 1520mm) 5 km from
the plot

Grodno airport - 20 km away



PLOT NO 6 SECTOR 1 "WEST" (LIDA)

AVAILABLE AREA: 94,7 ha

ENGINEERING INFRASTRUCTURE:



power supply



heating network



water supply



sewerage



gas supply



telecommunications

TRANSPORT AVAILABILITY:

2-lane road to the plot

railway track (gauge 1520 mm) next to the plot

Grodno airport - 100 km away



PLOT NO 6 SECTOR 2 "NORTH" (LIDA)

AVAILABLE AREA: 206,86 ha

ENGINEERING INFRASTRUCTURE:



power supply



heating network



water supply



sewerage



gas supply



telecommunications

TRANSPORT AVAILABILITY:

Asphalt concrete road

railway track (gauge 1520 mm) on the plot

Grodno airport - 100 km away



PLOT NO 6 SECTOR 4 (LIDA)

AVAILABLE AREA: 18,97 ha

ENGINEERING INFRASTRUCTURE:



power supply



heating network



water supply



sewerage



gas supply



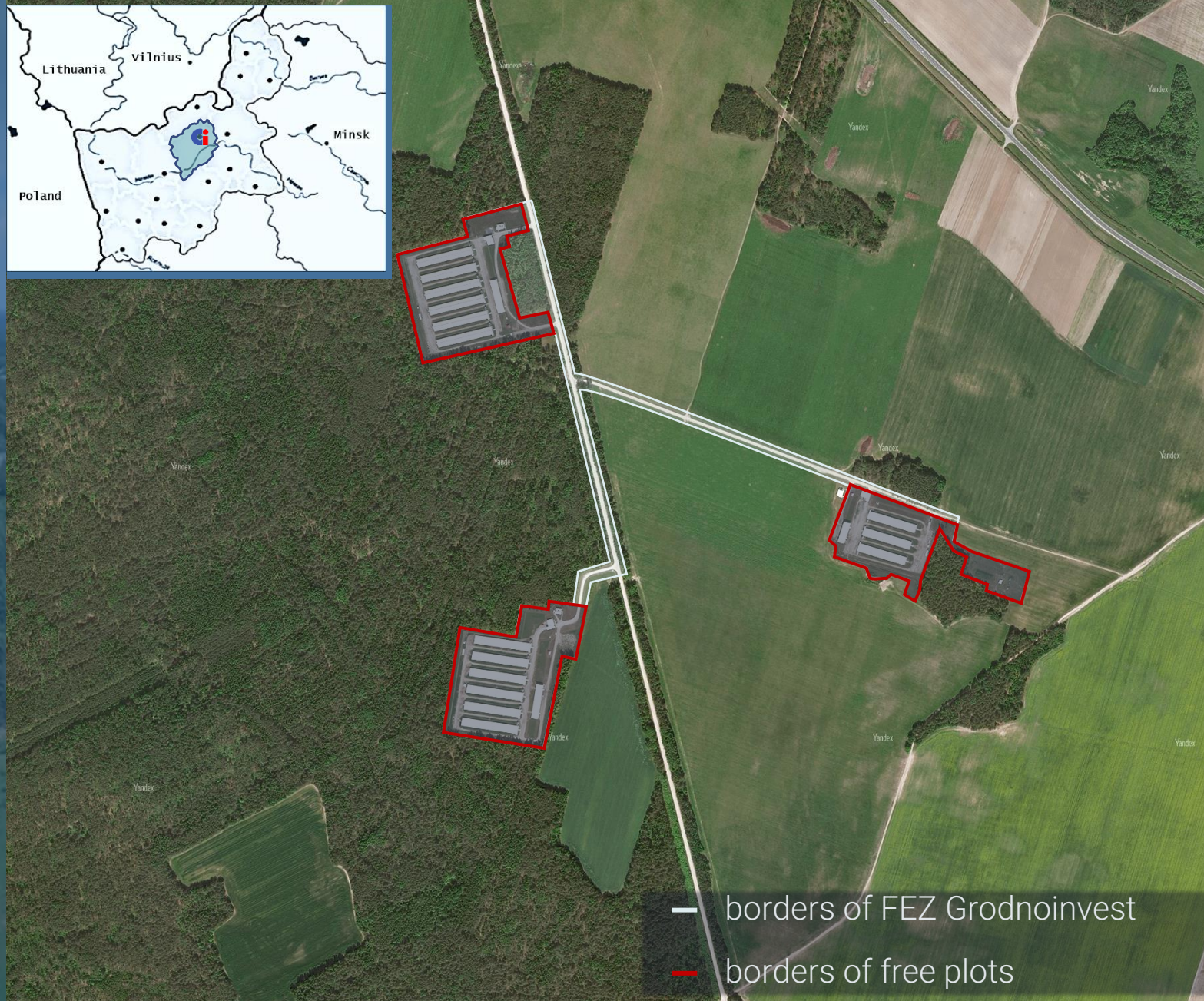
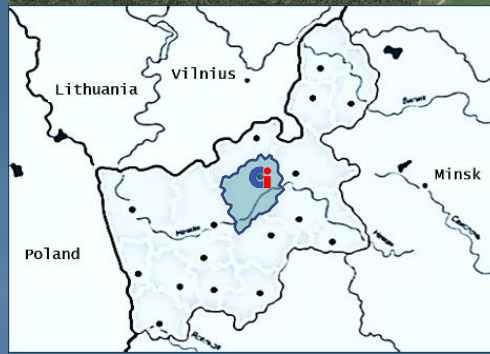
telecommunications

TRANSPORT AVAILABILITY:

Asphalt concrete road

railway track (gauge 1520 mm) on the plot

Grodno airport - 100 km away



PLOT NO 7 SECTOR 3 (MOSTY)

AVAILABLE AREA: 3,4 ha

ENGINEERING INFRASTRUCTURE:



power supply



heating network



water supply



sewerage



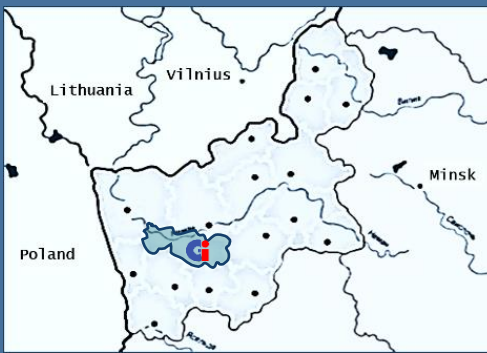
gas supply

TRANSPORT AVAILABILITY:

2-lane road next to the plot

railway track (gauge 1520 mm) next to the plot

Grodno airport - 50 km away



— borders of FEZ Grodnoinvest

— borders of free plots

PLOT NO 7 SECTOR 4 (MOSTY)

AVAILABLE AREA: 6,73 ha

ENGINEERING INFRASTRUCTURE:



power supply



heating network



water supply



sewerage



gas supply

TRANSPORT AVAILABILITY:

2-lane road next to the plot
railway track (gauge 1520 mm) next to the plot
Grodno airport - 50 km away



PLOT NO 8 (NOVOGRUDOK)

AVAILABLE AREA: 12,53 ha

ENGINEERING INFRASTRUCTURE:



power supply



heating network



water supply



sewerage



gas supply

TRANSPORT AVAILABILITY:

Asphalt concrete road

railway track (gauge 1520 mm) 16 km from the plot

Grodno airport - 150 km away



PLOT NO 9 SECTOR 1 (SLONIM)

AVAILABLE AREA: 15,06 ha

ENGINEERING INFRASTRUCTURE:



power supply



heating network



water supply



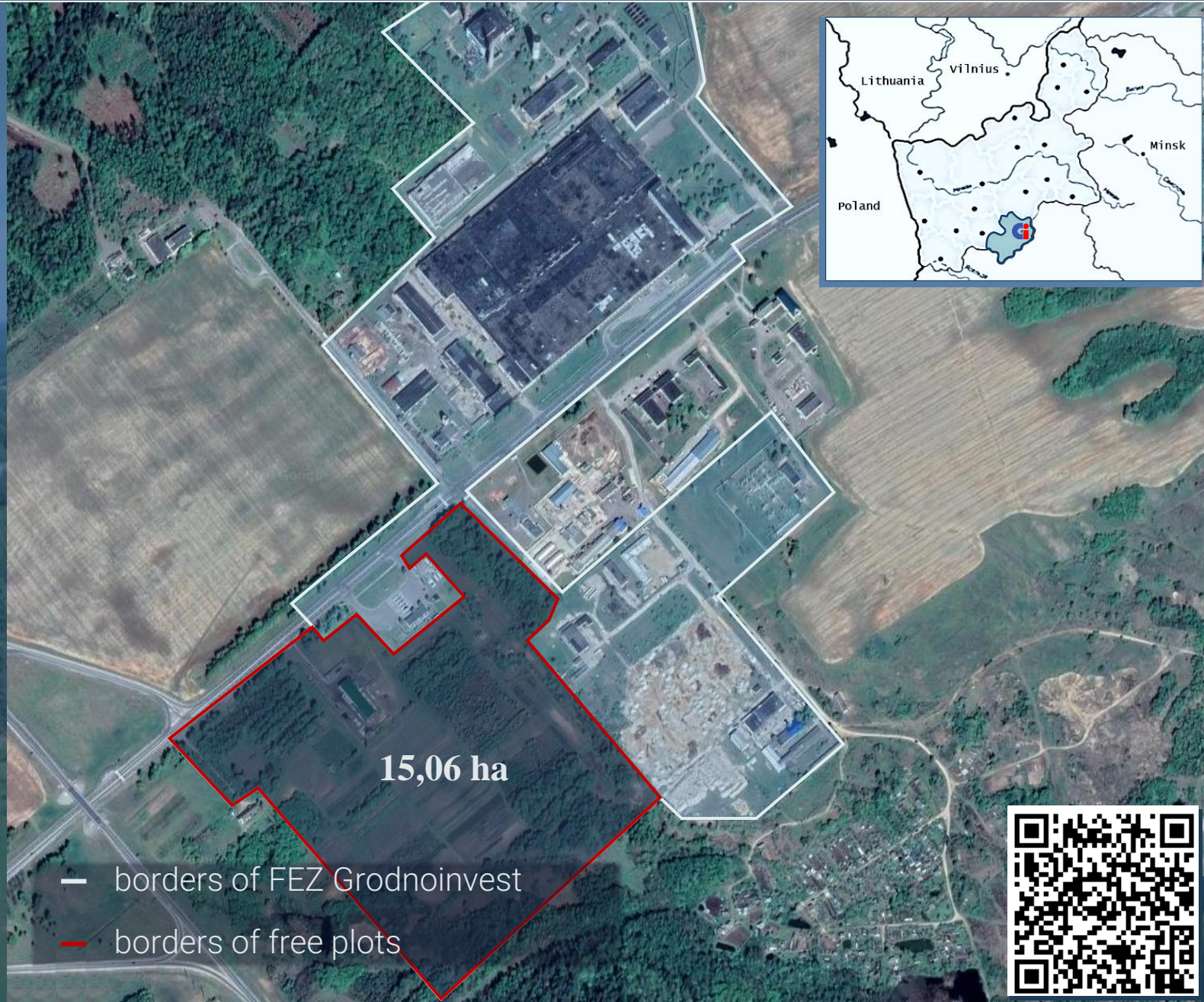
sewerage



gas supply

TRANSPORT AVAILABILITY:

Asphalt concrete road
railway track (gauge 1520 mm) 5 km from the plot
Grodno airport - 130 km away



PLOT NO 10 SECTOR 3 (SHCHUCHIN)

AVAILABLE AREA: 7 ha

ENGINEERING INFRASTRUCTURE:



power supply



water supply



sewerage



gas supply

TRANSPORT AVAILABILITY:

Asphalt concrete road

railway track (gauge 1520 mm) 3 km from the plot

Grodno airport - 60 km away



PLOT NO 11 SECTOR 1 (SMORGON)

AVAILABLE AREA: 180,55 ha

ENGINEERING INFRASTRUCTURE:



power supply



heating network



water supply



sewage



gas supply



telecommunications

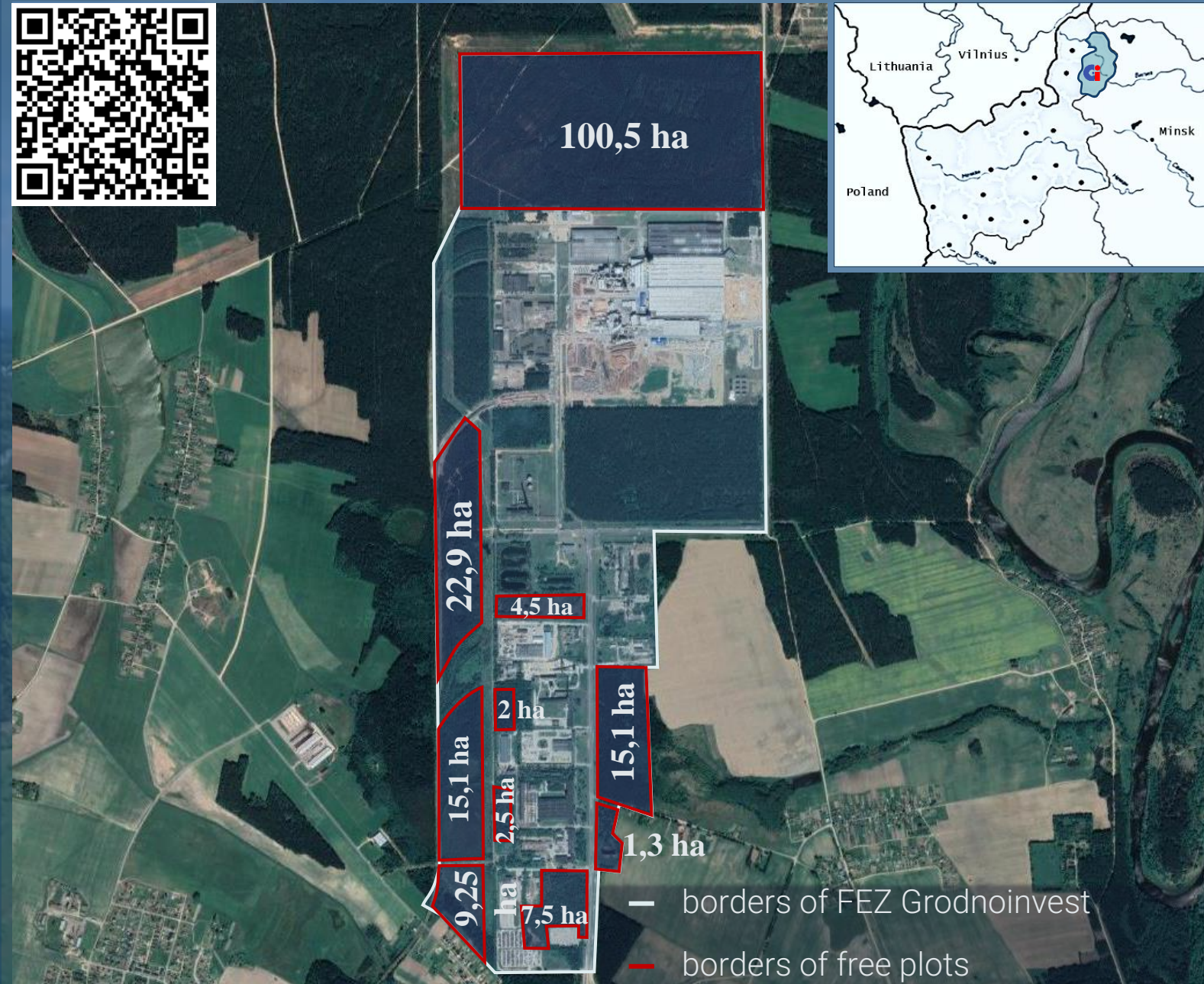
TRANSPORT AVAILABILITY:

4-lane road to the plot

railway track (gauge 1520 mm) on the plot

Grodno airport - 240 km away

Minsk airport - 120 km away



PLOT NO 11 SECTOR 2 (SMORGON)

AVAILABLE AREA: 17,82 ha

ENGINEERING INFRASTRUCTURE:



power supply



heating network



water supply



sewage



gas supply



telecommunications

TRANSPORT AVAILABILITY:

4-lane road

railway track (gauge 1520 mm)

Grodno airport - 240 km away

Minsk airport - 120 km away



— borders of FEZ Grodnoinvest

— borders of free plots

PLOT NO 12 (SVISLOCH)

AVAILABLE AREA: 30 ha

ENGINEERING INFRASTRUCTURE:



power supply



water supply



sewerage



gas supply

TRANSPORT AVAILABILITY:

Asphalt concrete road
railway track (gauge 1435 and 1520 mm) on the plot
Grodno airport - 80 km away



— borders of FEZ Grodnoinvest

— borders of free plots

